

IB Diploma Assessment Evening

31st Aug 2010

IB Diploma : Assembly Hall

Advanced Diploma: Lower Drama Studio

- Context

- Results 2010

Optimising Scores:

- GCSE Predictors

- The Core

- Assessment Schedule

- Predicted Grades

May 2009:

1,288 Diploma Candidates in Hong Kong

115 Diploma Candidates at Island School

Being an IB World School puts us in a global family of schools who share a common philosophy.

IB Graduates join an 'elite' group sharing a rare educational experience, skills and abilities.

	Results in 2010
Number of Candidates entered for the diploma	115
Number of Students entered for certificates	13
Number of Candidates achieving the diploma	108
Number of Students achieving certificates	23
School % achieving the Diploma	93.9%
World (2009) ⁽¹⁾ % achieving the Diploma	78.7%
Average Points Score for Diploma Candidates	33.0
World Average Points Score (2010)	27.0
Average Grade for all subjects	5.3
Highest diploma points awarded to a candidate	43

	No Awarded	School %	World % (2009) ⁽¹⁾
Number of Bilingual Diplomas	3	2.8%	31.1
Number of 40+ Diplomas	7	6.5%	5.5
Number of 35+ Diplomas	36	33.3%	21.7
Number of 30+ Diplomas	83	76.9%	50.0

Core Points (ToK & Extended Essay)

Score	School Number of Candidates	School %	World % (2009) ⁽¹⁾
3	5	4.7%	4.5
2	26	24.5%	17.0
1	56	52.8%	44.9
0	19	17.9%	28.6

	No Awarded	School %	World % (2009) ⁽¹⁾
Number of Bilingual Diplomas	3	2.8%	31.1
Number of 40+ Diplomas	7	6.5%	5.5
Number of 35+ Diplomas	36	33.3%	21.7
Number of 30+ Diplomas	83	76.9%	50.0

Subject Scores: More Context.

Grade	1	2	3	4	5	6	7
% all subjects globally	0.3	4.5	13.2	25.5	29.2	19.8	7.0
% all subjects Island School	0	0.7	6.2	19.4	31.4	30.3	12.0

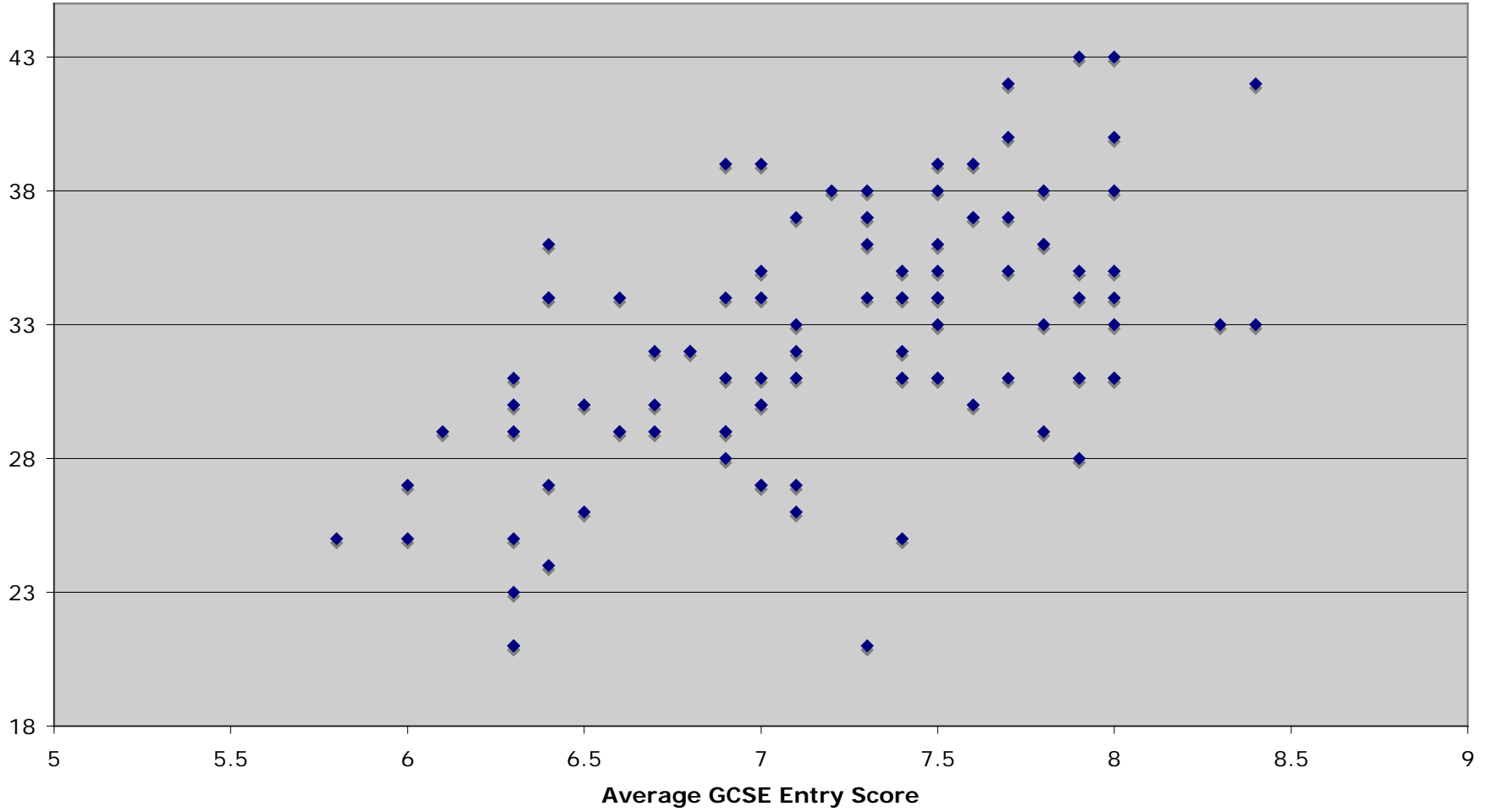
Judging Attainment

How do we know what score a student 'should' attain ?

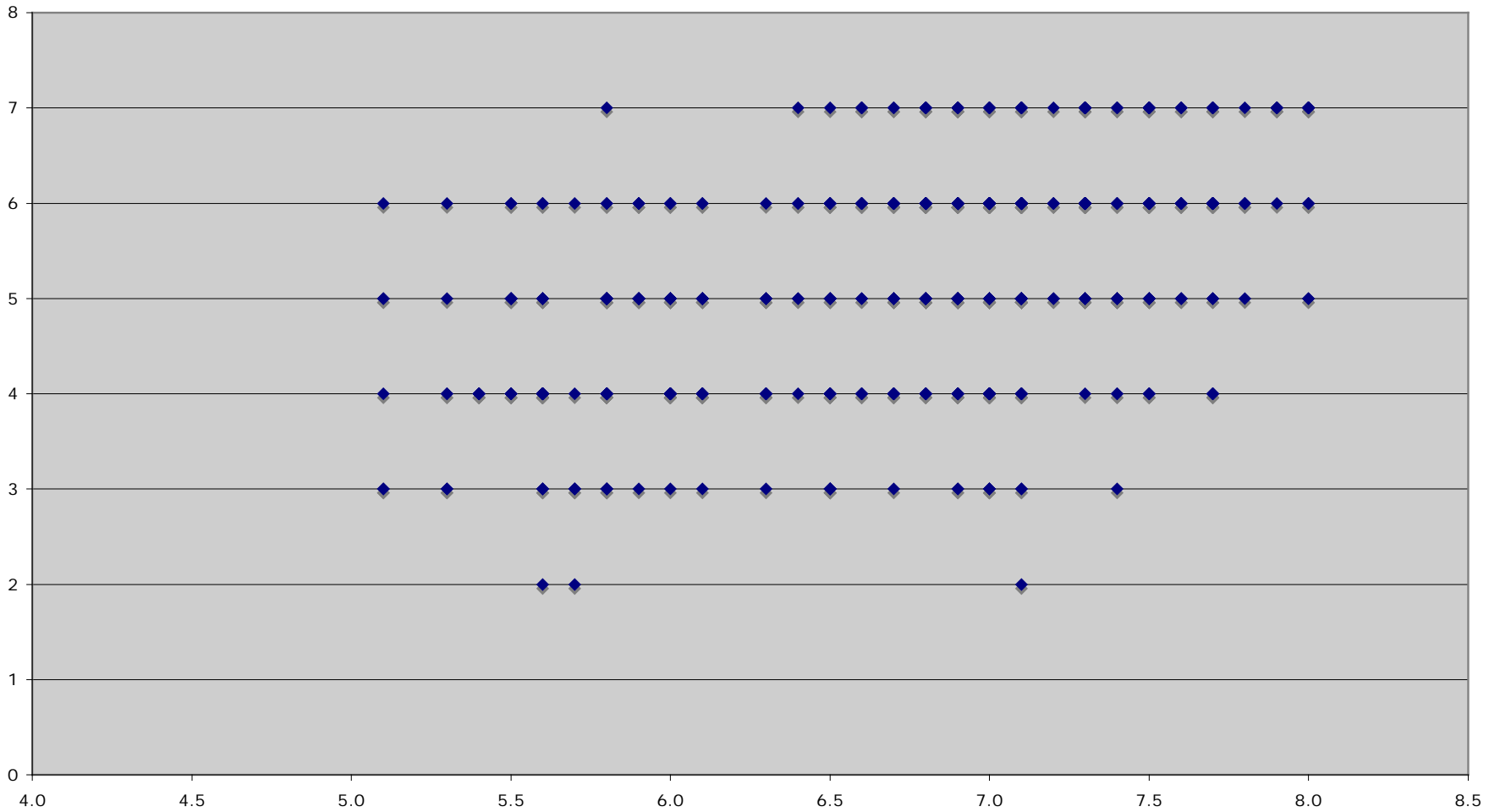
GCSE Entry Scores compared with ESF / UK historical data.

Cognitive Adaptive Baseline Test gives us a 'GCSE Indicator Grade'.

IB Result by Average GCSE Entry Score



Average GCSE Score compared to Subject Grade



Optimising Grades

The Assessment Schedule is designed to give the students:

- A full experience of senior school
- The best preparation for final examinations
- Spread workload.

Schedule Overview.

Term	Key Assessment 'Events'	CAS Events
1	Some Hexagon subjects will start IA's. Focus on skill development & content coverage.	Rainbow Trek, School Fair, CAS Week, ISSU, Islander, Matilda Sedan, House Charity Events ongoing Sporting events ongoing
2	Start EE Hexagon IA's Focus 'content coverage'	House Charity Events ongoing Sporting events ongoing
3	Hexagon IA's G4 Project ToK Presentations Year 12 Internal Exams Start World Lit essay	Summer CAS events / CAS Project ?
4	Hexagon IA's Submit World Lit essay & EE. Start ToK Essay Year 13 Mock Exams	Take part in some of the 'whole' senior school CAS events. CAS Week
5	Follow up Mock Exams Focus on Exam Skills. Finish Hexagon IA's Submit ToK Essay Revision	Finish CAS Programme
6	Final Public IB Exams	

Exams....,

Year 12 Internal Exams: May 2011

- Consolidate 1st year of learning
- Indicate learning/teaching needs for 2nd year
- Predicted Grades.

Year 13 Trial Exams: December 2011

- Simulate final exam period
- Consolidate course content
- Inform needs for last term of course.

Year 13 Final Exams: May 2012

- Schedule externally set by IB.
- Intensive 2 Weeks
- 'Long Thin Prep'
- Anxiety / Stress Management task.

Predicted Grades

Generated end of Year 12

Inform university application.

Based on:

- i) Attainment during the course
- ii) Qualitative knowledge of the student
- iii) Performance in trial examination.

Predicted Grades

